

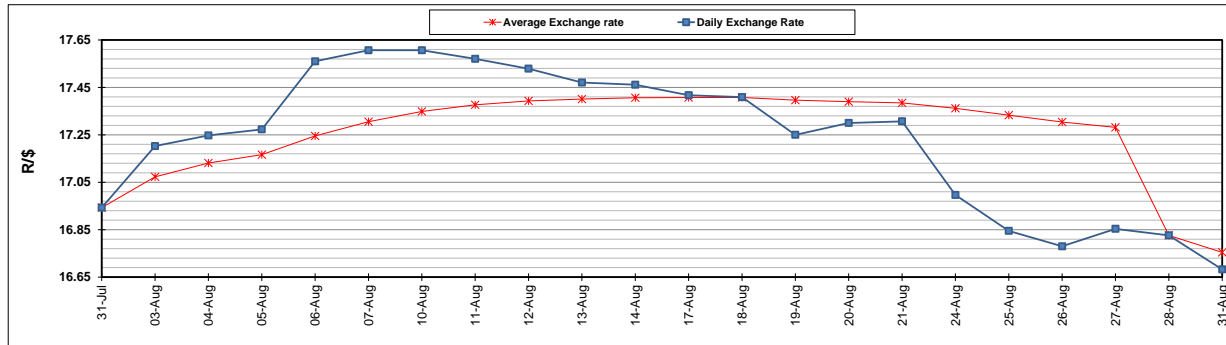
	PETROL 95 ULP	PETROL 93 ULP & LRP	DIESEL 0.05%	DIESEL 0.005%	ILL. PAR.
GAUTENG PUMP PRICE (SA c/l) AS FROM 02/09/2020	1,518.000	1,489.000	-	-	-
WHOLESALE PRICE (SA c/l) AS FROM 02/09/2020	-	-	1,327.560	1,331.960	716.828
SINGLE NATIONAL MAXIMUM RETAIL PRICE	-	-	-	-	899.000
BASIC FUEL PRICE - 31/08/2020 (SA c/l)	564.156	557.061	541.533	544.373	475.702
PRESS RELEASE CONTRIBUTION TO BFP 28/08/2020 - 31/08/2020 (SA c/l)	569.770	550.770	597.630	602.030	538.128
UNIT OVER/(UNDER) RECOVERY - 31/08/2020 (SA c/l)	5.614	(6.291)	56.097	57.657	62.426
AVERAGE BASIC FUEL PRICE 28/08/2020 - 31/08/2020	561.626	554.508	539.898	542.742	473.961
AVERAGE UNIT OVER/(UNDER) RECOVERY 28/08/2020 - 31/08/2020	8.145	(3.738)	57.733	59.289	64.168

ANALYSIS MOVEMENT OF AVERAGE OVER/(UNDER) RECOVERY

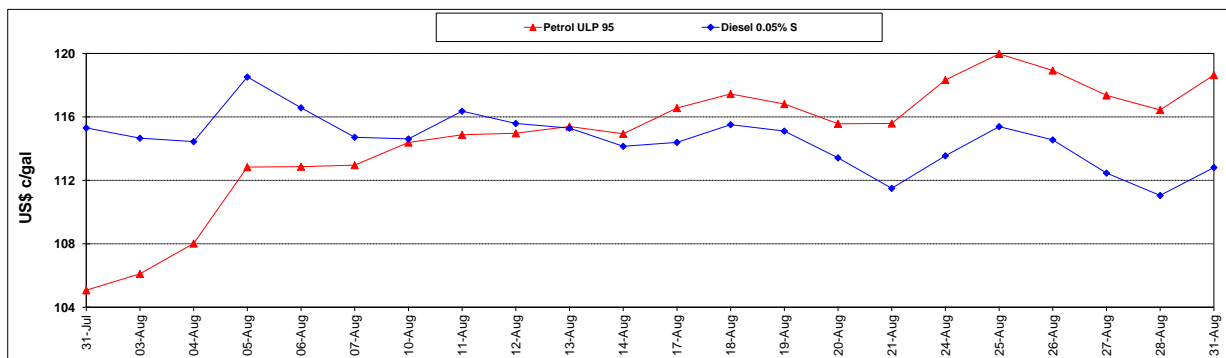
	PETROL 95	PETROL 93	DIESEL 0.05%	DIESEL 0.005%	ILL. PAR.
- MOVEMENT IN INTERNATIONAL PRODUCT PRICES	(9.525)	(21.183)	40.746	42.213	49.256
- MOVEMENT IN EXCHANGE RATE	17.669	17.445	16.986	17.075	14.911
AVERAGE UNIT OVER/(UNDER) RECOVERY 28/08/2020 - 31/08/2020	8.145	(3.738)	57.733	59.289	64.168

R/\$ EXCHANGE RATE - (R/\$16.6825 - 31/08/2020)

EXCHANGE RATE USED IN BASIC FUEL PRICE



INTERNATIONAL PRODUCT PRICES OF BASKET USED IN BASIC FUEL PRICE



BASIC FUEL PRICE IN SA CENTS PER LITRE

